

Integrity Status Report (ISR)

Brief Description: Live (or near live) reporting of multiple categories of asset integrity status using traffic light convention and configurable reporting rules, drawing data from multiple sources

Front End Software: Web-Based (Internet Explorer 6.0 or newer)

Database Platform Supported: MS Access, Oracle, MS SQL Server (any version)

Functionality Details:

The ISR concept is to make up-to-date asset integrity status visible across all categories, regardless of the data source. This provides asset managers and technical staff an easily accessible overview of integrity status, with the opportunity to drill-down into the details of areas of concern as required.

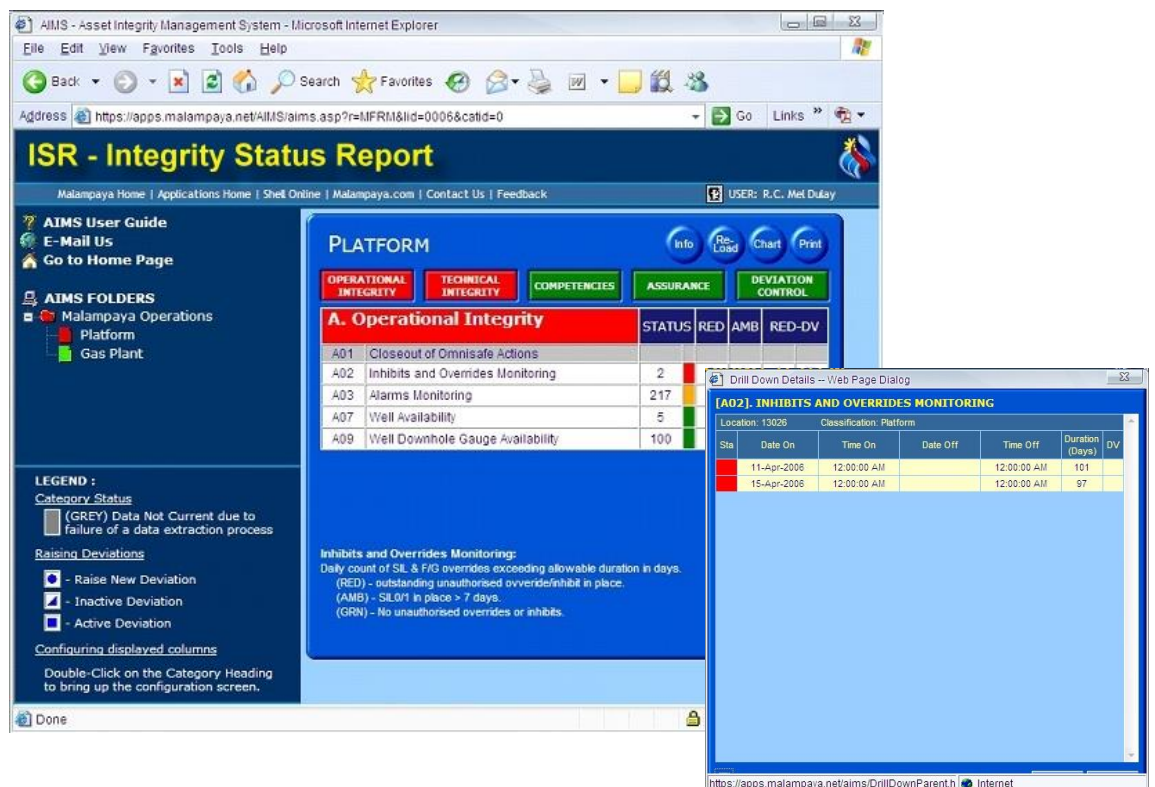
ISR reports integrity status against rules that have been documented and agreed to by the client. Hence a RED reported by the system means an “unacceptable condition” by the client’s own definition.

Each client will have a unique situation regarding existing data sources, and each client will have their own requirement for integrity categories and sub-categories, as well as integrity reporting rules.

Each level of the ISR application is configurable without additional programming: e.g. asset hierarchy, integrity categories and sub-categories, integrity reporting (traffic light) rules, reported information/level of detail, user list and user rights.

The system uses a staging area for integrity relevant data, into which updates can be configured on differing frequencies for each data source.

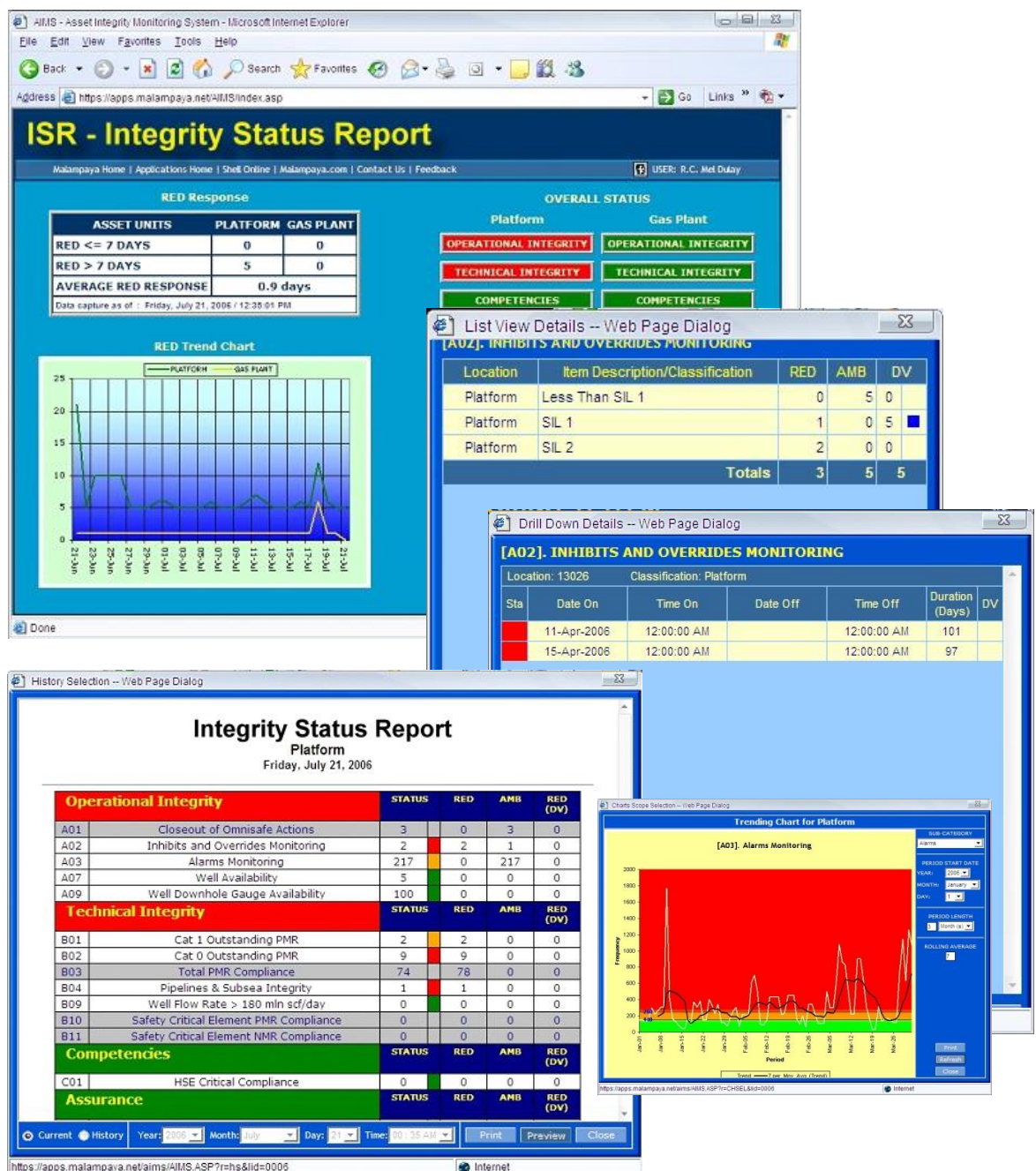
The ISR application can be used stand-alone, or integrated with the DevCon application, which is designed to manage responses to RED conditions.



Integrity Status Report (ISR)

ISR includes the following specific functionality features:

- Web-based front end
- User registration, role assignment, user rights assignment
- On-screen display and function permissions according to user role
- Two level drill-down details
- Event driven automatic email notification to configurable recipients
- Automatic update of information and integrity status from multiple data sources
- Paperless, real time reporting, configurable to follow client's integrity status rules
- Suite of reports and trending charts
- Customizable dashboard or splash screen to suit client requirement



The screenshot displays the AIS - Asset Integrity Monitoring System web interface. The main dashboard shows the following components:

- RED Response Table:**

ASSET UNITS	PLATFORM	GAS PLANT
RED <= 7 DAYS	0	0
RED > 7 DAYS	5	0
AVERAGE RED RESPONSE	0.9 days	
- OVERALL STATUS:**
 - Platform: OPERATIONAL INTEGRITY, TECHNICAL INTEGRITY, COMPETENCIES
 - Gas Plant: OPERATIONAL INTEGRITY, TECHNICAL INTEGRITY, COMPETENCIES
- RED Trend Chart:** A line graph showing the trend of RED (Response Time) over time for Platform and Gas Plant.
- List View Details -- Web Page Dialog:**

Location	Item Description/Classification	RED	AMB	DV
Platform	Less Than SIL 1	0	5	0
Platform	SIL 1	1	0	5
Platform	SIL 2	2	0	0
Totals		3	5	5
- Drill Down Details -- Web Page Dialog:**

[A02]. INHIBITS AND OVERRIDES MONITORING

Sta	Date On	Time On	Date Off	Time Off	Duration (Days)	DV
	11-Apr-2006	12:00:00 AM		12:00:00 AM	101	
	15-Apr-2006	12:00:00 AM		12:00:00 AM	97	
- Integrity Status Report (Platform):**

Friday, July 21, 2006

Category	Item	STATUS	RED	AMB	RED (DV)
Operational Integrity	A01 Closeout of Omnisafe Actions	3	0	3	0
	A02 Inhibits and Overrides Monitoring	2	2	1	0
	A03 Alarms Monitoring	217	0	217	0
	A07 Well Availability	5	0	0	0
	A09 Well Downhole Gauge Availability	100	0	0	0
Technical Integrity	B01 Cat 1 Outstanding PMR	2	2	0	0
	B02 Cat 0 Outstanding PMR	9	9	0	0
	B03 Total PMR Compliance	74	78	0	0
	B04 Pipelines & Subsea Integrity	1	1	0	0
	B09 Well Flow Rate > 180 mln scf/day	0	0	0	0
	B10 Safety Critical Element PMR Compliance	0	0	0	0
	B11 Safety Critical Element NMR Compliance	0	0	0	0
Competencies	C01 HSE Critical Compliance	0	0	0	0
Assurance					
- Trending Chart for Platform:** A line graph showing the frequency of alarms over time.